

TIME SIGNATURE, CONDUCTING PATTERNS and NOTE/REST VALUES

Time Signature- At the beginning of each sheet music shows how many beats there are in each measure.

Top number is how many beats there are in a measure

Bottom number shows the type of notes receiving one beat.

Top Number	4	3	2	6
Bottom Number	4	4	4	8

The time signature also determines the conducting pattern.

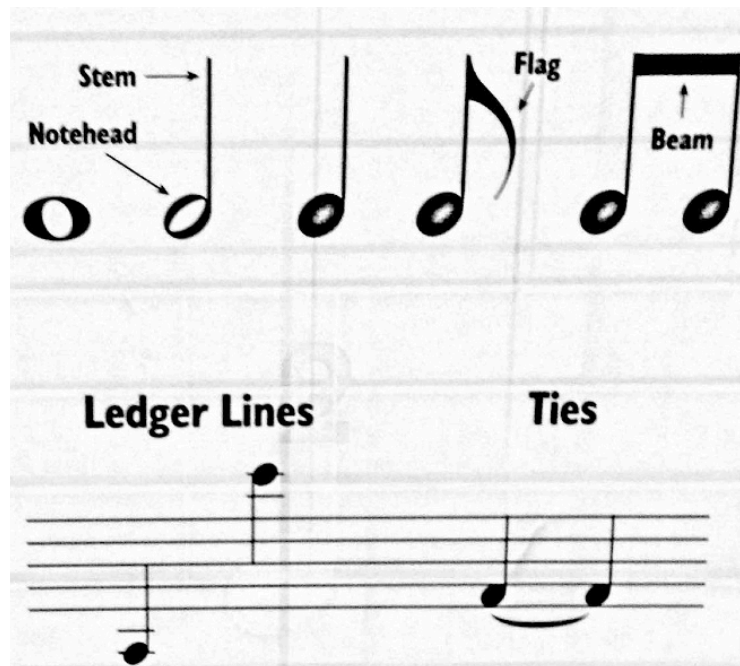
The Main Time Signatures (Count:)

The image shows three musical staves illustrating time signatures. The first staff is in 4/4 time, showing four quarter notes with a count of 1, 2, 3, 4. The second staff is in 3/4 time, showing three quarter notes with a count of 1, 2, 3. The third staff is in 6/8 time, showing six eighth notes with a count of 1, 2, 3, 4, 5, 6.

1. Sing "Happy Birthday" and determine the time signature and conducting pattern. _____
2. Sing "See You Again" and determine the time signature and conducting pattern. _____
3. Sing "Somewhere Over the Rainbow" & determine the time signature & conducting pattern. _____

NOTES

Notes- Every note has a notehead. A stem of a flag can be added to a notehead. A combination of these parts determines how long or short the sound is (**duration**). If two or more flags occur right after the other, it may be connected to a beam instead of having flags. The location of the notehead on, above or below the music staff determines how high or low the sound is (**pitch**). When the pitch of a note is below or above the staff, the notes are then placed on or in between extra lines called **ledger lines**. When two notes of the same pitch are connected with a **tie**, the duration of the second note is added to the first.



DURATION OF NOTES AND RESTS

Whole note- 4 beats

Whole rest- 4 beats of rest

Dotted half note- 3 beats

Dotted half rest- 3 beats of rest

Half note- 2 beats

Half rest- 2 beats of rest

Quarter note- 1 beat

Quarter rest- 1 beat of rest

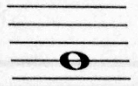
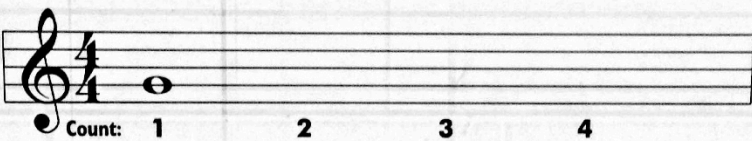
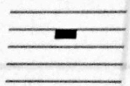
Eighth note- $\frac{1}{2}$ of a beat

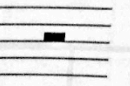
Eighth rest- $\frac{1}{2}$ beat of rest


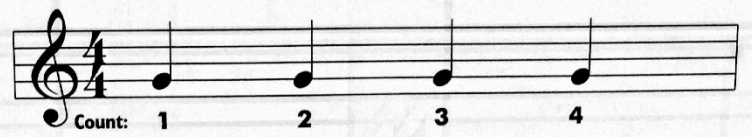

Sixteenth note- $\frac{1}{4}$ of a beat

Sixteenth rest- $\frac{1}{4}$ beat of a rest

Notes and Rests

Whole Note   **Whole Rest** 

Half Note   **Half Rest** 

Quarter Note   **Quarter Rest** 

Eighth Note   **Eighth Rest** 

Sixteenth Note   **Sixteenth Rest** 